

LEADING MANUFACTURER OF
FLEXIBLE PACKAGING

www.totalpolyprint.com

COMPANY PROFILE



T TOTAL POLY PRINT

40 YEARS
EXPERIENCE

ABOUT US

LEADING MANUFACTURER OF
FLEXIBLE PACKAGING

40 YEARS
EXPERIENCE

Based in Daman, Total Poly Print is one of the leading Flexible Plastic Packaging manufacturers in India. Earlier a part of **Total Packaging Services, which has been incepted since 1985**, together we hold a strong reputation in the market for customer satisfaction & quality products.

We are a one-stop-shop for all the plastic packaging requirements as we have in house extrusion for Multilayer LD film, printing, lamination & pouching services. Our products are made from virgin material and they are 100% recyclable. Our packaging solutions caters to variety of products in the FMCG and consumer goods sector.

WHY CHOOSE US?

At Total Poly Print, manufacture wide range of flexible plastic solutions and they are highly demanded due to variety of reasons



We have all in house facilities from extrusion of plastic films to printing to lamination & cutting & sealing. You can avail your final product from the scratch all under one roof.



We use high level of printing techniques that provides great quality of printing with upto 8 colours in Roto gravure and Flexo printing.



Our high class machinery from renowned machine producers provides very fine quality & great precision in your finished products.



We have an experience of almost 40 years in this field of Printing & Pouching but we have been in the field of Plastic packaging since 1985.



Our products are 100% recyclable.

LEADING MANUFACTURER OF
FLEXIBLE PACKAGING

www.totalpolyprint.com



BLOWN FILM LINE

- ✓ 2 multi layer extrusion machines.
- ✓ Available in 3 Layer.
- ✓ Thickness of 20 – 120 Microns.
- ✓ Maximum Width upto 1800 mm.



PRINTING

- ✓ 3 Roto gravure printing machines.
- ✓ 3 Flexo printing machines.
- ✓ Available upto 8 colours.
- ✓ Width upto 1000 mm.



LAMINATION

- ✓ 1 solventless.
- ✓ 1 solvent based.
- ✓ Solventless lamination ensures safety for consumption of packaged food.



POUCHING

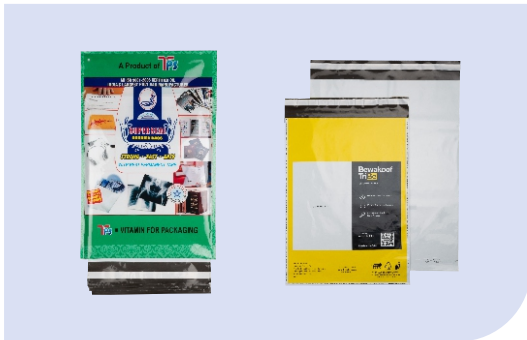
- ✓ 12 Hi Speed Pouching Machines.
- ✓ Types of Pouches- Stand up, Zipper, Shaped, Centre Seal, Side Seal Pouches.
- ✓ Capability to do LDPE Pouching.
- ✓ Value additions like D Cut, 3 Finger Punch, Butterfly punch, V-Notch, Loop Handles, etc.



01 RIDER / BIRYANI

Our Metalised Laminated pouches are made of MET PET & multilayer Natural LD. These centre sealed pouches, food grade pouches, popularly known as Biryani in the market helps you pack hot or cold food and keep it fresh and warm.

It is specially used in restaurants or small food stalls for parcel or take away. Available in sizes in multiple sizes.



02 SUPER SEAL (COURIER BAGS)

Providing high quality black and white Multi Layer LD courier bags for E commerce and confidential documents.

We have various options available with facility of plain or printed, pocket or no pocket or pocket with tape.



03 SILVER BOPP BAGS

Bopp bags are known for their strength and clarity, hence it is a preferred option in garment and stationery industry.

It is used specially for packing clothes, jewellery items and stationery items. It is available in a wide variety of sizes, with the option of custom print or plain, and additional features like euro slot and knurling gusset.



04 DRY FRUIT BAGS

Our own laminated pouch specially designed to pack dry fruits in general market.

There is an option of availing this bag in the form of 3 side seal or with bottom gazette pouch.

Available in many sizes for packing of 100 gm, 250 gm, 500 gm and 1 kg.



05 STORAGE & FREEZER BAGS

In order to store your food in freezer or carry dry snacks while you travel, our pouches are 100% safe and serves your purpose.

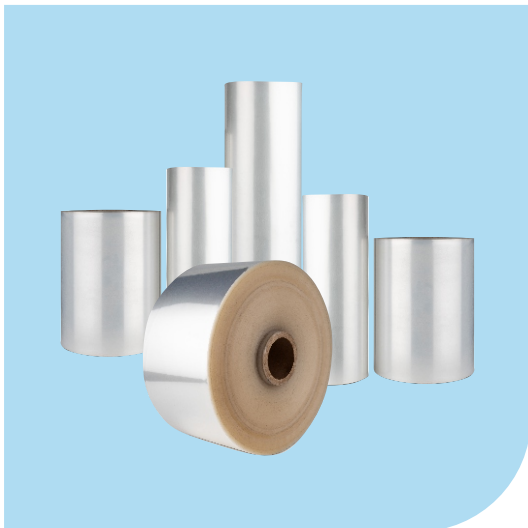
These 3 ply laminated pouches come with bottom gazette and zipper facility. Available for 500 gm and 1 kg packing.



01 LAMINATED ROLLS

Lamination is a process through which two or more flexible packaging webs are joined together using a bonding agent. **This process is done to protect the product and extend its shelf life. We provide Solvent based & Solvent less lamination facilities**

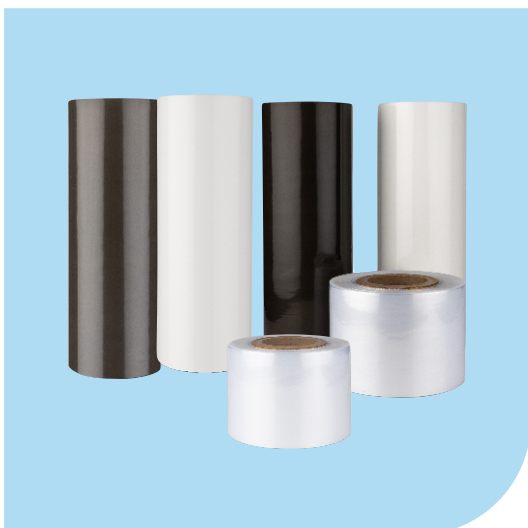
- ✓ PET/LDPE
- ✓ PET/MET PET/LDPE
- ✓ PET/Alu Foil/LDPE
- ✓ BOPP
- ✓ PET/ CPP
- ✓ PET/NY/Alu Foil/ CPP or LDPE
- ✓ PET/LDPE/MET PET or ALu Foil/LDPE
- ✓ Multi Layer LDPE



02 BOPP ROLL FORM

BOPP films are transparent bi-oriented polypropylene films designed to offer high performance, great appearance and easy converting for flexible packaging and other applications. **BOPP film is majorly used for applications that require moisture resistance, clarity & high tensile strength.**

- ✓ High transparency
- ✓ High clarity
- ✓ Available in printed & plain forms
- ✓ High Tensile Strength



03 MULTILAYER LDPE

We have 3 layer blown extrusion facilities in house. Here, the multilayered films produced helps in overcoming one of the most common problems in food packaging **shelf-life and freshness.**

Multilayer LD films are available in varied sizes and microns.

- ✓ High resistance to moisture
- ✓ Puncture resistance
- ✓ Increased shelf-life
- ✓ Prevention from corrosion, degradation & oxidation
- ✓ Retain product freshness



01 3 SIDES SEAL

These side-sealed pouches, open on one side for heat sealing, offer strength, user-friendliness, and space efficiency. With tear notches for easy opening, they come in customizable options: printed or plain designs, laminated or single-layer, matte or glossy, 2-ply or 3-ply.

- ☑ Window pouches
- ☑ Euro slot or round punch hole
- ☑ Punched out Handle or D cut bag
- ☑ Zipper
- ☑ Sealable



02 STANDEE

Our Standee Pouch features a bottom gusset for superior capacity and minimal shelf space use. It enhances storage efficiency and visibility, available in printed/plain, matte/glossy finishes, various thicknesses, and two or more ply configurations.

- ☑ Window pouches
- ☑ Euro slot or round punch hole
- ☑ Punched out Handle or D cut bag
- ☑ Zipper
- ☑ Sealable



03 ZIPPER SEAL

Our Zipper Pouches feature a secure zip-lock for airtight sealing, maintaining product freshness. Ideal for snacks, spices, coffee, or pet treats, they are customizable in size, shape, material, and finish to enhance your brand.

- ☑ Window pouches
- ☑ Euro slot or round punch hole
- ☑ Punched out Handle or D cut bag
- ☑ Zipper
- ☑ Gazette



04 SIDES SEAL

These flat pouches, made from a single film piece and sealed on two sides, offer easy filling and maximum volume. **Economical and high-quality, they can be sealed with tape or a heat sealer for flexibility.**

- ☑ Window pouches
- ☑ Euro slot or round punch hole
- ☑ Sealable



05 SPOUT POUCHES

Our Spout Pouches, designed for liquids and semi-liquids, feature an integrated spout for easy use. Lightweight with superior barrier properties, **they ensure freshness and reduce waste.** Customizable options are available to match your branding needs.

- ☑ Window pouches
- ☑ Gazette



06 CARRY BAGS

Introducing our Loop Handled Bags: a perfect blend of convenience and style. Featuring sturdy handles, they're ideal for retail, events, and promotions. **Customizable designs elevate your brand, offering effortless elegance and replacing bulky bags.**

- ☑ Gazette



07 COMPOSTABLE BAGS

Compostable bags are made from a variety of sustainable materials. Keeping in mind the current scenarios, **we also provide biodegradable plastic bags that are 100% compostable and offer sustainable alternatives to traditional plastic for those who need so.**

- ☑ Euro slot or round punch hole
- ☑ Punched out Handle or D cut bag
- ☑ Sealable



08 SIDE GUSSETS

Our side gusset pouches expand for maximum storage without sacrificing stability, ideal for snacks to pet food. **Customizable in design, finish, thickness, and ply, they offer convenience, functionality, and various branding options to suit your needs.**

- ☑ Window pouches
- ☑ Punched out Handle or D cut bag
- ☑ Zipper
- ☑ Sealable

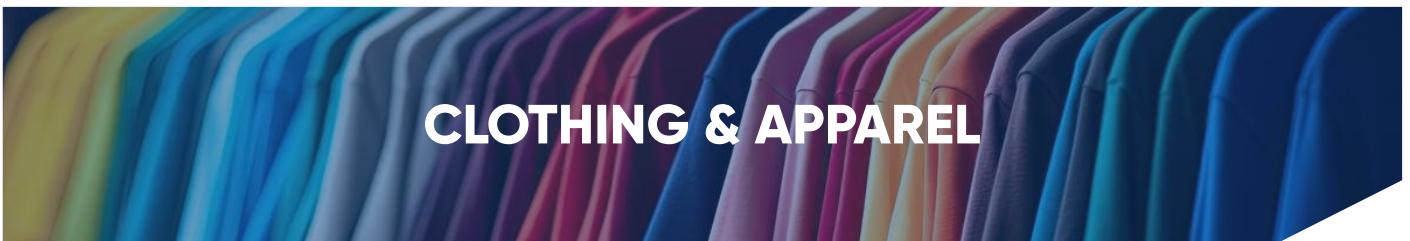


09 CENTER SEAL

Featuring a sleek center seal design, these lightweight and portable pouches are perfect for on-the-go lifestyles. Enhance your brand with **vibrant printing and laminating options, boosting product visibility and consumer appeal.**

- ☑ Window pouches
- ☑ Euro slot or round punch hole
- ☑ Punched out Handle or D cut bag
- ☑ Zipper
- ☑ Gazette

PRODUCTS APPLICATION



Quality Control



QUALITY PRODUCTS FOR CUSTOMER SATISFACTION

Customer satisfaction is paramount, and it begins with delivering quality products.

CALIBRATED MEASUREMENT INSTRUMENTS

To maintain our high standards, we have a dedicated Quality Control (QC) lab equipped with advanced testing equipment.



ADVANCED TESTING LAB EQUIPMENT

Our QC facilities include Computerized Single Screw UTM (Universal Testing Machine), Computerized Static and Kinetic Friction Tester, Dart Impact Tester, Heat Sealing Machine, and Opacity Tester. These ensure rigorous checks on product quality, allowing us to consistently meet and exceed customer expectations.



Certificates



LEADING MANUFACTURER OF FLEXIBLE PACKAGING

LEADING MANUFACTURER OF
FLEXIBLE PACKAGING

40 YEARS
EXPERIENCE



CONTACT US

 **TOTAL POLY PRINT**
Survey no. 261/3-A, opp. Dabhel cricket ground,
Dabhel, Daman - 396210 (U.T.), India

 info@totalpolyprint.com

 +91 72111 35002 | +91 98985 85118

FOR COMPANY
DETAILS SCAN HERE

